

**November Anniversaries**

Gregorio Carreto	8
Keith Sorensen	8
Lotte Freeman	4
Joseph Hartley	3

**Safety First**

Don't forget to honk your Forklift horn!



**November Forecast**

King Crab	Local Salmon
Halibut	Pollock
Cranberries	Cod
Bottomfish	

**Who's This?**



Here's a hint: He has been working for BCS since 1966. Wow, that's a long time! He has a positive and friendly attitude and definitely knows his fish. Date of picture is approximately 1948. Answer on page 3.

**Employee of the Month**

"Just sit right back and you'll hear a tale, a tale of the Employee of the Month". (sing to the tune of the Gilligan's Island theme song) October's Employee of the Month is Mark Roath. It's appropriate that recognition to Mark is in November, with cranberries hitting especially hard right now at Orchard, where Mark plays an important role on Night Shift. Mark has worked here over 9 years. He worked just about everywhere in the plant before moving to Orchard, where he has become Mike Mill's right hand man. Mark fills in as Leadman at Orchard when Mike is on vacation. He also handles the Trans-Ocean Products account until Todd Morrow comes to work or when he is away. We can rely on Mark to do anything else that needs to be done. Marks versatility, however, pales next to his disposition. Whatever Mark sets out to do, he does it with a positive attitude. When you see Mark, please congratulate him on being October's Employee of the Month.



*Scott Albrecht, Night Shift Foreman*

**Message From the President**

**It's Thanksgiving time again!!!**

As I write, (October 25) BCS is in the throws of another big cranberry season. We expect this year's deliveries to be an all time record by several million pounds. By the time this goes to press the lion's share of the product will have been harvested and frozen, however we will likely continue to receive additional product through the first week in November. Many THANKS go out to Ocean Spray Cranberries and to our hard working, experienced staff at the Orchard Plant for their dedication to this very valued customer. Quite a few employees have been working what we call "six to six" shifts continuously since mid-October, including weekends. This year the crop was so large and came on so hard that the Squalicum Plant staff helped with the receiving & freezing as well. THANK YOU for chipping in on this year's marathon season. The engineering staff has also been working hard to keep the freezers down to temperature, while our office staff and information staff have been working weekends and long hours to keep up with the inventory control end of the equation. Even our management team has been sighted pitching in where they can. Great job again, everyone. THANK YOU!

Also arriving at our waterfront facility are several million pounds of salmon, pollock, halibut and black cod from the Puget Sound & Alaska and vegetables from Michigan. THANKS to our Fish House and Squalicum Waterfront facility staff for handling an equally demanding month filled with large volumes of inbounds while balancing and accommodating the traditionally high fall outbound shipments.

*continued on page 2*

## BCS Welcomes Tanya Asmundson



“I have been here for almost 2 years now after moving from Russia. I love Bellingham and enjoy volunteering with the BCS ESL program. Gayle is an excellent teacher and the students in the classes are very friendly, very hard workers and I love working with them.”

### New Arrival

Congratulation to Rod and Kary Lambert on the birth of their daughter, Sarah Louise.



*continued from page 1*

Many THANKS to all of our valued fresh fish customers including: Trident Seafoods, American Canadian, Q.S.S. Specialty Services, Palomino Seafoods, Homeport Seafoods, Bornstein Seafoods, Arrowac Seafoods, Dana Besecker, Northport Seafoods, Harbour Marine, Icy Strait Seafoods, Smoki Foods, Crystal Alaska Seafoods, Wildcatch, Bears Wildfish and once again to Twin City Foods for bringing in the veggies. We really appreciate your business! Also at the waterfront facility, Gourmet Cuisine continues to produce sauce products on a regular basis and has reached a nice level of activity on a year round basis, THANK YOU! Fishking Processing, another valued on-site tenant/customer has settled into their new state-of-the-art smoked seafood production facility quite well. THANK YOU for your business!

Many thanks also to Trans Ocean Products and Icicle Seafoods who operate large surimi facilities at the Orchard Street plant. We really appreciate your continued business, THANK YOU! Also at Orchard, we have Sakuma Brothers Processing conducting an IQF repackaging operation keeping everyone at Dock 3 on their toes, as if cranberries were not enough, THANK YOU Sakumas!

BCS's Boxing lines have experienced the busiest season in years and continue to do a great job taking care of the various orders that are requested each day by our valued customers. Great job to our BCS team and THANKS to all of our customers for your continued business!

Best wishes for a wonderful THANKSGIVING!

*Doug Thomas, BCS President & C.E.O.*

## How to Set a Screen Saver Password

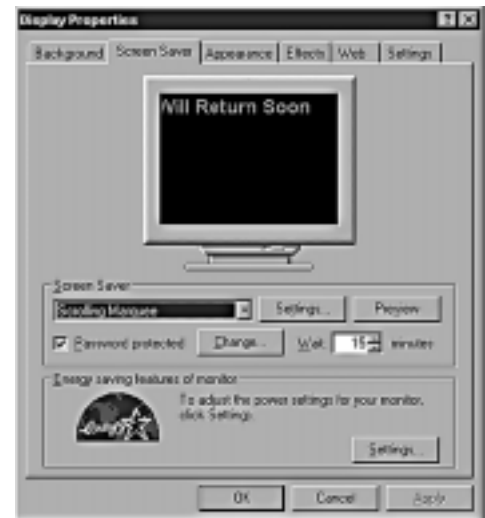
Click on **Start, Settings, Control Panel** and double click on **Display** icon.  
Click on **Screen Saver** tab and in the outlined Screen Saver box do the following:  
Click on the drop-down arrow, then click on your choice of screen saver.  
Click on **Settings** button to adjust Position, Speed and Background color, then click OK.  
Click on the up or down arrow in the **Wait minutes** box to select the number of minutes of non-use after which the password protected screen saver comes on.  
Check the Password protected box and click on the **Change** button to enter or change password.  
Click on the **Preview** button to see how screen saver will look (optional).  
Click **Apply** and **OK**.  
Exit (X) the **Control Panel** and you are done. Good Job.

To get back to your work when screen saver is on just hit any key or move the mouse and window will pop up and ask for your password.

A screen saver password is highly recommended if you are doing confidential work or your logon allows access to sensitive material. This is especially important if you are away from your computer longer than planned.

Note: A password protected screen saver is probably not a good idea if you are sharing a computer with other people.

*Clyde A. Duranceau, IS Manager*



## Training Wheels Keep on Turning to Support your Lifelong Learning

by Karen Hollingsworth



*Jessica Morales of D Jay Enterprises Inc. is shown here taking her forklift driving test. She carefully moves into a stack of pallets on one side of the warehouse and drives them across to set them down again to prove her load stacking ability.*

*BCS promotes safety beyond it's own boundaries and is pleased to offer a 2-part forklift safety certification class. The first is the IVES method of forklift theory (about 4 hours in the classroom) and the second part is a forklift safety driving to it's own employees and also employees of our customers, vendors and tenants. The forklift driving test includes a 32-point set of criteria which are graded in respect to performance. Pictured here is Jim Calman of J. Calman Industries with BCS instructor, Gary Morris.*



*Storm Water Pollution Prevention training started in October and will be ongoing for BCS employees and tenants. Featured here are Mike Clausen and José Roqués with one of nine Spill kits distributed throughout the plants. All stormwater drains have been stencilled with "DUMP NO WASTE DRAIN TO BAY". The rule of thumb is simple... **only rain water goes down the storm drains.***

*Gourmet Cuisine, a tenant in the main BCS facility, contacted us with a request for a Basic Safety class in ammonia and Shelter in Place training. BCS was delighted to accommodate all of their employees in the Fish House training room. Their safety committee is in the process of building a solid foundation, in which training plays a big part. Gourmet Cuisine is promoting safety in the workplace for its employees.*



## Be Thankful

by Tim Unger



This country has been through many trials, tragedies and tough economic times. It is getting harder to be positive if you spend any time looking at the news and *now* we are supposed to be thankful.

Let's remember, though, that the tradition of "Thanksgiving" was started by people who faced severe difficulty reaching this country, where many died just trying to make the trip. Those that survived arrived to a wilderness where they were required to build their own homes with crude tools and prepare food for a winter that would probably be harder than any they had ever experienced.

This country is what it is today because people persevered through the toughest of situations to establish a new home and a new country. At every turn there was hardship, war, pestilence and economic unrest and yet they succeeded. We need to be thankful in these difficult times even as our ancestors were in their time. We have, just as they had, family, friends and, in spite of it's problems, a great nation in which to live. So whatever your religious beliefs, whatever your situation, Be Thankful!!

May all of you have a joyous Thanksgiving holiday with friends and family.

Happy Thanksgiving to all BCS customers, employees, vendors and friends.

---

Answer to "Who's This?"  
from pg. 1:

Gary Hershey, West Dock Foreman

## Valores Basicos de BCS

Cooperacion • Integridad • Calidad • Responsabilidad • Actitud

Cooperación: Nosotros promovemos el concepto de cooperación. Haremos todo lo posible para animar nuestros empleados en sus esfuerzos para hacer un buen trabajo cuando sea posible.

Integridad: Nosotros tratamos a toda la gente y toda la propiedad con sinceridad y respeto y nos dedicaremos sobre tener buenas relaciones con todos los empleados y clientes.

Calidad: Estamos entusiastamente comprometidos en proveer servicio del mas alto nivel de ejecución y también en proveer producto de la mejor calidad.

Responsabilidad: Nosotros con gusto acepto la responsabilidad por nuestros acciones.

Actitud: Nosotros mantenemos un modo cierto y positivo sobre los clientes y nuestros empleados y también mostraremos un modo progresivo en nuestro trabajo.

## BCS Core Values

Teamwork • Integrity • Quality • Accountability • Attitude

Teamwork: We support the concept of teamwork. We encourage fellow employees in their efforts to do a good job, helping whenever possible.

Integrity: We treat all people and property with honesty and respect, and are dedicated to building trust with our employees and customers.

Quality: We are enthusiastically committed to providing the highest standards of service, product and performance.

Accountability: We willingly accept responsibility for our actions.

Attitude: We have a positive outlook and progressive approach toward our jobs, customers and fellow employees.

# IC EB Breaker

The



November 2002



# BCS\*

Only Your Product Gets an Icy Reception

Bellingham Cold Storage Company  
 Squalicum Waterway  
 2825 Roeder Ave  
 PO Box 895  
 Bellingham, Washington 98227-0895  
 Phone: (360) 733-1640  
 Fax: (360) 671-1259  
 E-mail: [bellcold@bellcold.com](mailto:bellcold@bellcold.com)  
 Website: [www.bellcold.com](http://www.bellcold.com)

